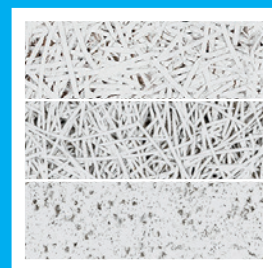




KNAUFCEILING
Solutions

DATASHEET

HERADESIGN® Creative Module

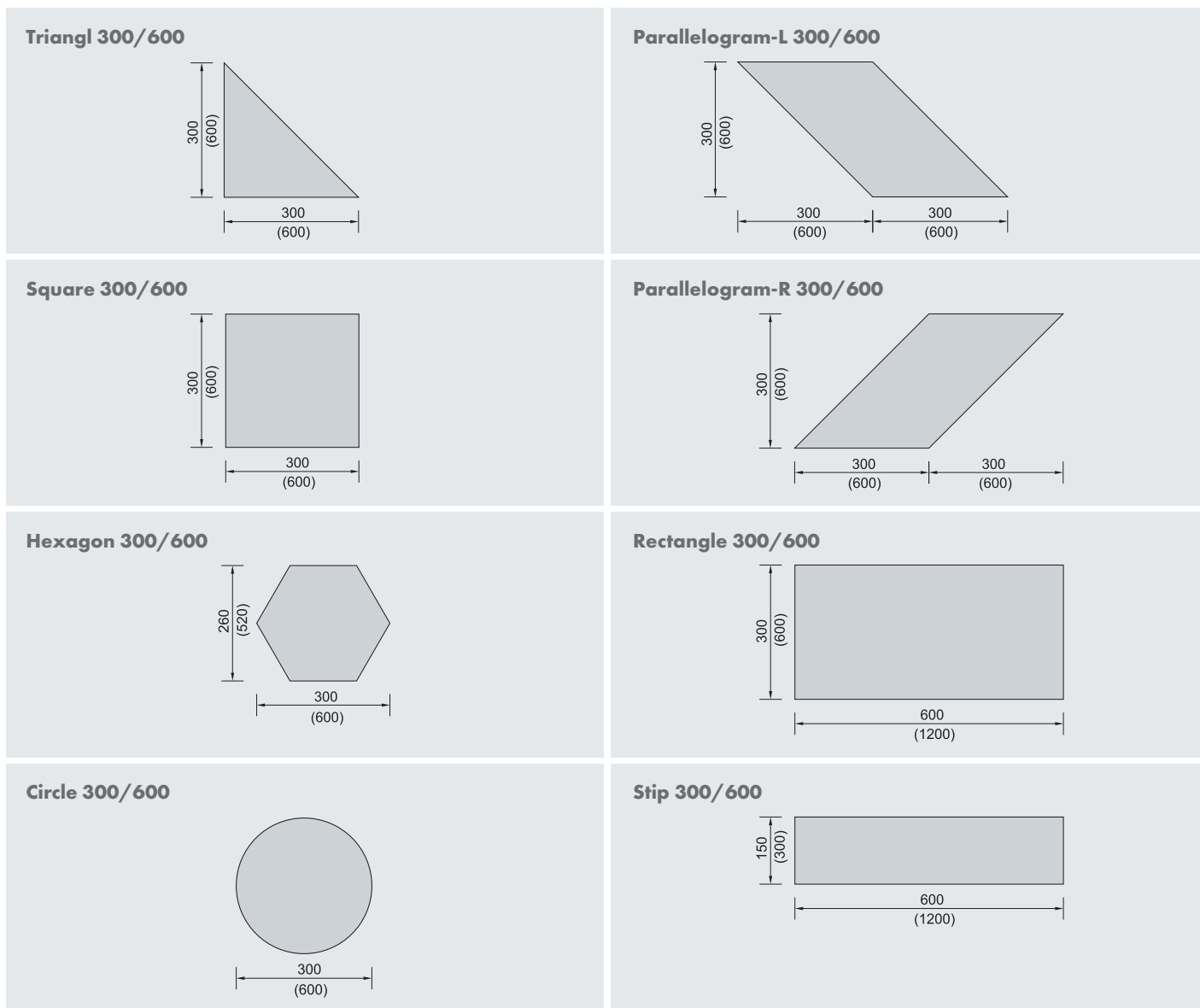


HERADESIGN® Creative Module is a single layer magnesite bonded wood wool acoustic ceiling and wall panel.

- Eight attractive shapes to choose from
- Available in HERADESIGN® Fine, Superfine and Micro surfaces

		HERADESIGN® Fine	HERADESIGN® Superfine	HERADESIGN® Micro				
Surface								
Edge details		Edge AK-01 						
Thickness		25mm						
Dimensions		Grid size 300 and 600mm						
System		For ceiling applications, the mechanical fixing of the Modules is mandatory. Adhesive installation for Module 300 on appropriate substructure on the wall up to a height of 3m.						
Weight		12.6 - 15.0 kg/m ²						
Fire reaction		Euroclass B-s1,d0 according EN 13501-1						
Sound absorption		HERADESIGN® Fine: α_w up to 0.90 / NRC up to 0.90 HERADESIGN® Superfine: α_w up to 1.00 / NRC up to 1.00 HERADESIGN® Micro: α_w up to 0.55 / NRC up to 0.55						
Thermal conductivity		HERADESIGN® Fine: $\lambda = 0.090$ W/mK according EN 12667 HERADESIGN® Superfine: $\lambda = 0.090$ W/mK according EN 12667 HERADESIGN® Micro: $\lambda = 0.100$ W/mK according EN 12667						
Humidity resistance		up to 90% RH						
Areas of application		A decorative and acoustically effective suspended ceiling and wall panel for use in interior spaces.						
Special information		<ul style="list-style-type: none"> Manufacturing tolerances in nominal dimensions: L4, W2, T2: ± 1 mm, for lengths > 1250mm L4: ± 2 mm Maximum changes in dimension in standard climate 23°C/50% relative humidity: $\pm 1\%$ 						
Cleanability								
Colours		Standard colours	vd Vario Design colours					
		White Similar to RAL 9010 Beige Natural tone 13	Granite Steel Green Marble Copper Oak Brass Sandstone Concrete	<ul style="list-style-type: none"> Other colours from popular RAL and NCS colour systems are available. Deviations in colour and visual appearance may occur due to the rough fibre and panel surface. 				
Sustainability								

PRODUCT RANGE



TECHNICAL DATA

Requirement per m ² of wall or ceiling area							
Description		Module 300 ¹⁾			Module 600 ²⁾		
		Area (m ²)	Pcs./m ²	Pcs./carton	Area (m ²)	Pcs./m ²	Pcs./carton
	Triangle	0.045	22.22	28	0.180	5.56	40
	Parallelogram	0,090	11,11	7	0,360	2,78	10
	Square	0,090	11,11	14	0,360	2,78	20
	Rectangle	0.180	5.56	7	0.720	1.39	10
	Strip	0.090	11.11	14	0.360	2.78	20
	Circle	0.070	11.11	14	0.283	2.78	20
	Hexagon	0.058	17.25	14	0.234	4.27	20

¹⁾ Raft 300: max. 20 cartons per pallet. ²⁾ Raft 600: max. 3 cartons per pallet.

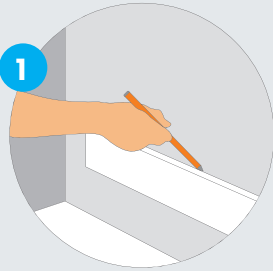
INSATALLATION

Variant: Adhesive installation on the wall

The following installation guidelines refer to the adhesive installation of HERADESIGN® Creative acoustic rafts in 300mm Modules on the wall up to a maximum wall height of 3m. For installation with HERADESIGN® screws, follow the corresponding procedure.

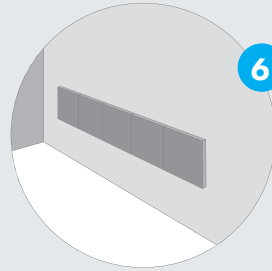
Important: The underlying surface must be able to take the load, level, dry and dust-free. Handling and underlying surface temperature min. +7°C. Surfaces with unknown properties should be checked for their adhesion. The general guidelines for the installation of HERADESIGN® wood wool acoustic tiles must be adhered.

1 | MARK
a horizontal guide.

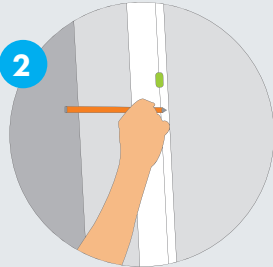


6 | INSTALL THE FIRST ROW

The first row must be installed accurately. To ensure the elements don't slip and to ease alignment we recommend using a horizontal stop bar. Alternatively, the first row can be secured with screws or wall tacks.

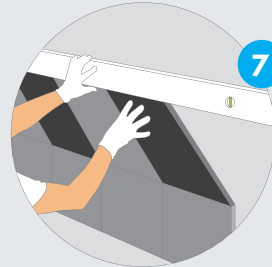


2 | MARK
a vertical guide.

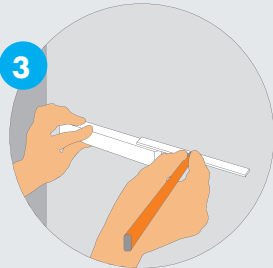


7 | FURTHER ADHESIVE

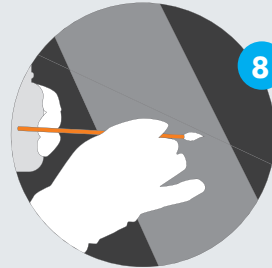
The next rows from the bottom are positioned and adhered. The position of the rafts should be checked at regular intervals with a spirit level.



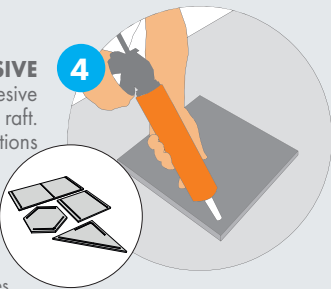
3 | DEFINE THE MODULE
Depending on the type of Module to be adhered, several guides in a 300mm or 600mm Module may be necessary.



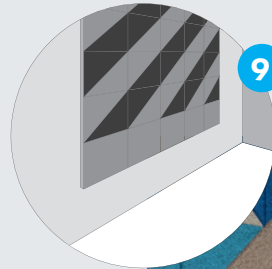
8 | CHECK
After completion, any colour damage or fibre breakage may be improved with a small brush and the supplied repair paint.



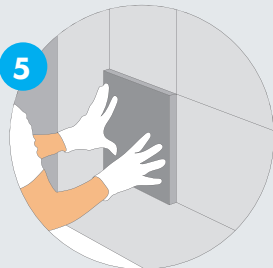
4 | APPLY ADHESIVE
Apply a line of adhesive to the acoustic raft. Knauf Ceiling Solutions recommends using Knauf POWER-ELAST. Processing time: approx. 15 min. Amount: approx. 1 cartridge/m². Illustrative example of the adhesive application lines.



9 | ENJOY
Complete wall installation



5 | ALIGN
the rafts to the Module and adhere to the underlying surface by applying pressure.



INSATALLATION

Notes on installation guidelines

HERADESIGN® Creative Modules are produced, checked and delivered to site with great care.

During the delivery, please always check:

- Number of packages, (pallets, cartons, m²)
- Compare the contents of the packages with the delivery note and the labels on the packaging
- Accessories: plugs, screws, touch up paint, profiles or other items
- Are the goods or parts damaged?

IMPORTANT: Any transport damages, product quantity or quality issues must be checked and approved by the driver. The dealer who shipped the goods must be informed immediately.

Important factors for a successful and attractive HERADESIGN® Creative installation are exact processing and suitable working conditions. Careful installation and good quality products ensure a satisfactory result.

All HERADESIGN® Creative interior installations must only be carried out under controlled humidity and temperature conditions. All building activities which create dust must be completed before the start of installation.

Check the HERADESIGN® Creative Modules for damage before installation. Damaged tiles should not be installed.

Transport to site, unpacking the HERADESIGN® Creative products and handling should always be carried out with due care. Always work with clean hands and clean tools. We recommend wearing clean gloves.

Before starting installation, check the underlying surface for loadbearing capacity.

When required, the Modules can be cut using a circular saw, table saw or jigsaw. Remove any dust with a soft brush.

Slight damage to the tile surface as well as cut edges are carefully painted after installation. This is done with a fine brush. Only apply a small amount of paint to avoid colour differences. Cut edges can be painted with a short-haired roller (e.g. microfibre roller 13mm, paint roller 10mm, etc.) or brush.

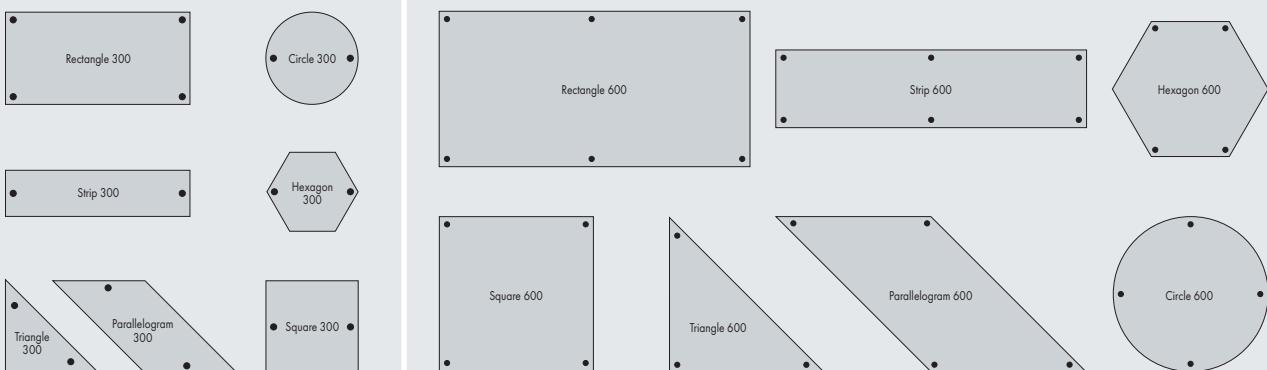
When using screws to install HERADESIGN® Creative, the HERADESIGN® Bitholder ,easy' is the idea tool for the exact insertion of the screws. The required screw depth must be set on a sample tile before installation.

Variant of screw installation on the wall and on the ceiling

Alternatively, HERADESIGN® Creative acoustic Module can be screw fixed onto 60 x 27 x 0.6mm CD profiles or 30/60mm wooden lathes.

Screw type: HERADESIGN® screws, 50 x 4.5mm.

Alternatively, grooved or resin-treated staples may be used. Staple width > 8mm, staple length > 50mm.



The location of the screws can vary depending on the pattern and substructure when using 300mm Modules.