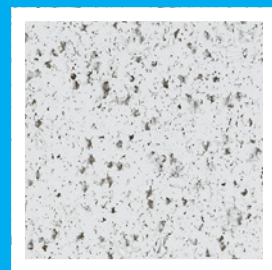




KNAUFCEILING
Solutions

DATASHEET

HERADESIGN®
Micro



HERADESIGN® Micro is a single layer magnesite bonded wood wool acoustic ceiling and wall panel.

- Fine pored surface texture
- Building biology recommended
- Cradle to Cradle Certified® Gold for white and natural colours only

System	A2.1, A2.2	B2.1, B2.2				C2.1	S2.1							
Edge details	VK-09	AK-00	AK-02/5	AK-03	SK-04	SY-02								
	VK-10		AK-02/10		SK-05									
	VK-10/5		AK-02/20		SK-06									
Dimensions (mm)	600 x 600, 625 x 625, 1200 x 600, 1250 x 625, additional sizes on request.													
Thickness (mm)	25, 35													
Weight (kg/m²)	15.0 (25mm), 19.0 (35mm)													
Sound absorption	Thickness (mm)	TCH (mm)	HERADESIGN® (mm)	Acoustic lining (kg/m²)	Frequencies (Hz), α_p					Entire range		Class		
	25	55	0	0	125	250	500	1000	2000	4000	NRC	α_w		D
	25	55	0	90	0.25	0.45	0.55	0.45	0.40	0.45	0.50	0.45		D
	25	200	0	0	0.45	0.60	0.45	0.30	0.30	0.35	0.40	0.35 (L)		D
	25	200	25	90	0.45	0.40	0.30	0.25	0.30	0.30	0.30	0.30 (L)		D
Sound attenuation	Dn,f,w bis zu 30 dB according DIN EN ISO 10848-2:2006													
Ball impact safety	Ball impact resistant according to DIN 18 032 / part 3 or class 1A according to EN 13964 annex D, Ball impact resistant for panel thicknesses ≥ 25mm													
	<ul style="list-style-type: none"> • Ceiling panelling system B2.1, B2.2, C2.1 • Wall panelling system B2.1, B2.2, S2.1 													
Fire resistance class	EI 30 (a←b): detailed structure according to usability certificate													
Reaction to Fire	Euroclass B-s1,d0													
Thermal conductivity	$\lambda = 0.09 \text{ W/mK}$ gemäß EN 12667													
Humidity resistance	Suitable for rooms with a constant humidity of up to 90%.													
Application areas	A decorative and acoustically effective suspended ceiling and wall panel for use in interior spaces as well as roofed outdoor areas that are not directly exposed to environmental influences such as rain or pollutants.													
Installation	The installation of HERADESIGN® acoustic panels should take place during the last phase of the job, and in temperature and humidity controlled conditions. All building activities which create dust must be completed before the start of installation. Store the panels flat and protect against moisture and dirt. The packaging does not protect the products against rain. HERADESIGN® products should be installed in strict accordance with Knauf Ceiling Solutions installation and storage guidelines.													
Designation code	WW-EN 13168-L4-W2-T2-S2-P2-Cl3													
Special information	<ul style="list-style-type: none"> • Manufacturing tolerances in nominal dimensions: L4, W2, T2: ± 1 mm, for lengths > 1250mm L4: ± 2mm • Maximum changes in dimension in standard climate 23° C/50 % relative humidity: ± 1 ‰ 													
Cleanability														
Colours	Standard colours		Vario Design colours											
	White Similar to RAL 9010	Beige Natural tone 13	Granite	Steel	Green Marble	Copper	Oak	Brass	Sandstone	Concrete				
<ul style="list-style-type: none"> • Other colours from popular RAL and NCS colour systems are available. • Deviations in colour and visual appearance may occur due to the rough fibre and panel surface. 														
Sustainability														

Products may vary from country to country. Please contact your local sales representative. For further information and legal notice, please visit our website.